

PROBLEM:

Cost-cutting cheap inferior glass being installed in areas that need to provide a safety element to a building or previous generation older glass that hasn't been upgraded to a compliant safety standard could lead to a serious or even fatal injury especially if it's the last line of defence like a glass balustrade around a hi-rise balcony in an apartment block.

SOLUTION:

Safety Window Film installed by PARAGON. It can help reduce the chance of tragedy by bringing the strength of glass up to a compliant safety standard and therefore help prevent breakage or shattering that will send dangerous shards of glass careering off a balcony to unsuspecting pedestrians below.

EXPLODING GLASS BALCONIES IN MELBOURNE APARTMENTS EXPOSE FAULTY BUILDING PRODUCTS.

- BY AISHA DOW JULY 1, 2017

A frightening series of 'spontaneous' glass balcony explosions at Melbourne apartment buildings has highlighted the dangers of cheap and faulty construction products flooding into Australia.

Video footage obtained by Fairfax Media has captured two extraordinary explosions in recent months, where glass panels on the outside of an inner-city tower suddenly shattered.

The falling shards missed passing pedestrians by just a few metres.

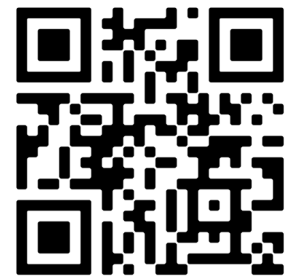
The failures are suspected to be cases of spontaneous glass breakage linked to poor manufacturing. It is thought the balcony balustrades contain nickel sulphide, which can cause glass to fail when exposed to extreme temperature change, wind or other stresses.

It is also a startling example of a growing issue of poor-quality building materials making their way into Australia on shipping containers, unchecked, before being installed in homes and on buildings; in some cases threatening lives and property.

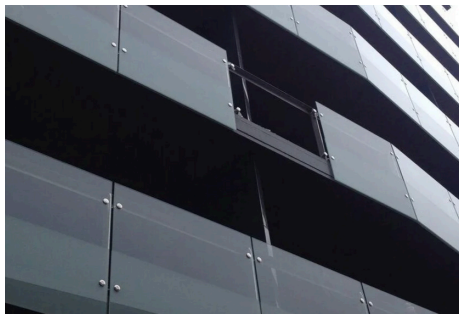
"It's a huge problem and there's more to this than we know about it" said the chief executive of the Australian Window Association, Tracey Gramlick.

Ms Gramlick said the prevalence of building products that did not meet Australian standards, combined with poor workmanship and installation, meant many buildings would have to undergo repairs in years to come.

The Housing Industry Association said the majority of building products entering the country were not being tested by customs officials to ensure they complied with Australian Standards.



SCAN THE QR CODE TO WATCH THE VIDEO AND READ THE STORY OR VISIT THEAGE.COM.AU



Melbourne Apartment Block Glass Balustrade

Described in media reports as; 'Spontaneous Glass breakage' further amplified as a 'public liability hazard for glass installed as balconies/balustrades, glass pool fences and shower screens.' It's industry common knowledge that glass breakage is often caused by a mix of low-quality imported glass and less than satisfactory workmanship.

THE SOLUTION: Once applied to existing glass, Safety Window Film by 3M™ holds glass together on breakage which provides significant reassurance against frightening and dangerous occurrences like residential and commercial break-ins and home invasions. With a national footprint, PARAGON can service customers all over Australia with effective Safety & Security film solutions.

KEY SPECS:

- 4mm Film
- 400 foot-pound impact
- ANISZ97.1 Standard

LOCATION: MELBOURNE
RECOMMENDED
PRODUCT:
3M™ SCOTCHSHIELD